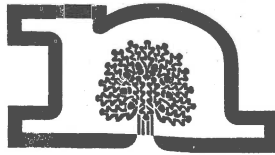


Nottinghamshire County Council

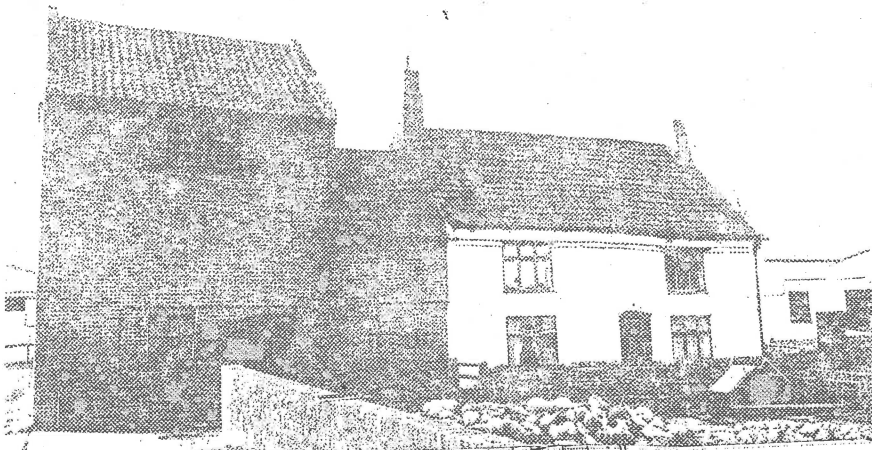
Department of Planning & Transportation



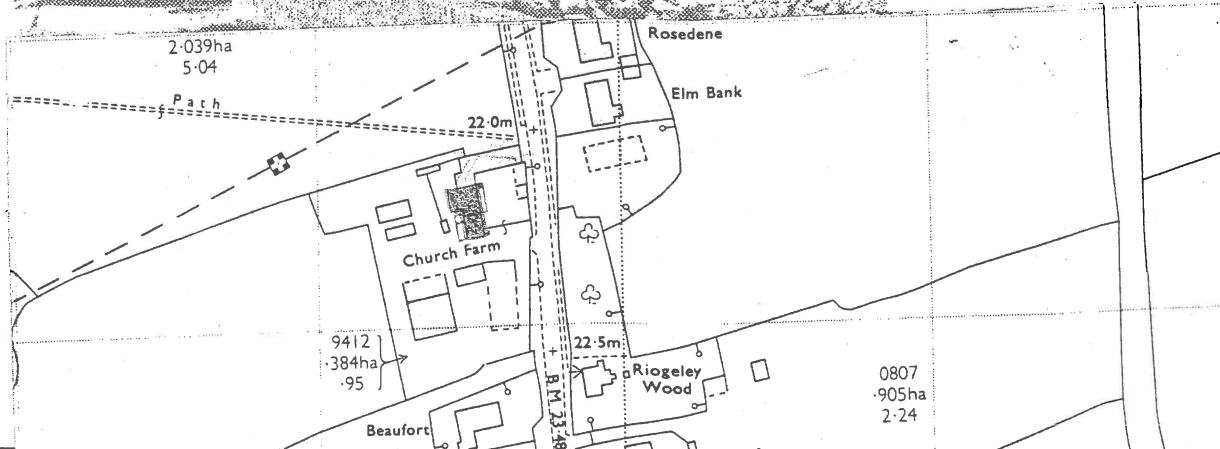
HISTORIC BUILDINGS RECORD

Listing Serial No. <u>4 / 39</u>		District <u>Bassetlaw</u>	File <u>1.2.75</u>
Grid Ref. <u>7294 8414</u>		Civil Parish <u>Hayton</u>	
Grade <u>II</u>	Date Listed <u>25.11.74</u>	Building/Address <u>Church farm house and adjoining storehouse and pigeoncote, Main Street (w side)</u>	At risk
Group Value	Other Status		
Conservation Area			

Farm house, storehouse and pigeoncote. Late C17 and C18. Brick, partly rendered, with some timber framing and pantile roofs. House may contain timber framing. Moulded brick eaves, stepped coped gables, 2 gable stacks. 2 storeys, 4 bays. House, to right, has off-centre door with segmental head, flanked by single C20 casements, and above, 2 similar casements. Single bay storehouse to left, has 5 breathers and segmental headed relieving arch. Above, 2 blocked openings. Pigeoncote, to left, has to left a single casement and to right, stable door with segmental head. Above, 4 tiers of pigeonholes with shelves. At rear, single storey, single bay lean-to timber framed store with brick infill.



- House significantly overgrown
- The adjoining store is note-worthy for the plan + post arrangement which is of the type seen in the north of the county. See photos



Scale of Map <u>1:2500</u>	Date of Photograph <u>Dec - Feb 1985</u>
Background Material	Other Photographs